
GM Parts Connect: Installation of Snap-on Integration Service Browser Extension and IPS Integration Utility for DMS-Integrated Dealerships

Overview

Users of GM Parts Connect who integrate with a Dealer Management System (DMS) are required to install both the appropriate Snap-on Integration Service browser extension and IPS Integration Utility. Users who do not plan to integrate with a DMS may disregard these instructions.

Installation of the Snap-on Integration Service Browser Extension

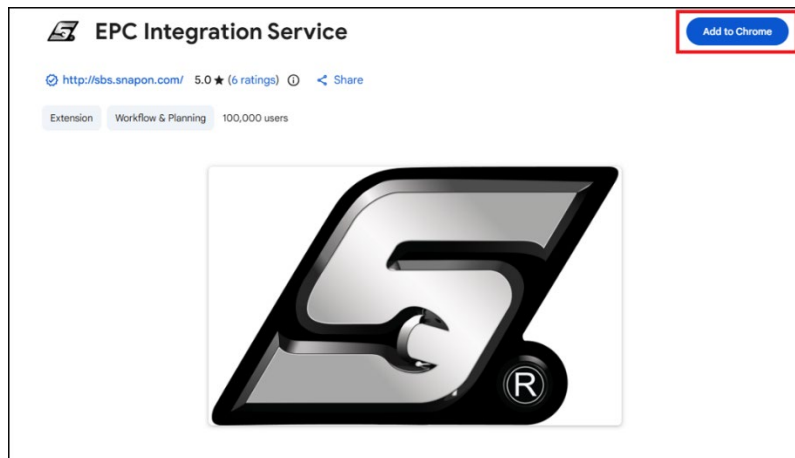
To install the appropriate browser extension, follow the instructions corresponding to your web browser.

Google Chrome

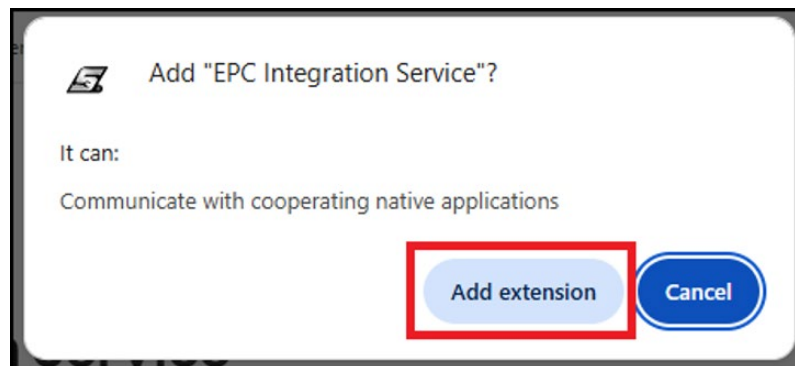
1. Click the link below:

[Snap-on Integration Service Browser Extension for Google Chrome](#)

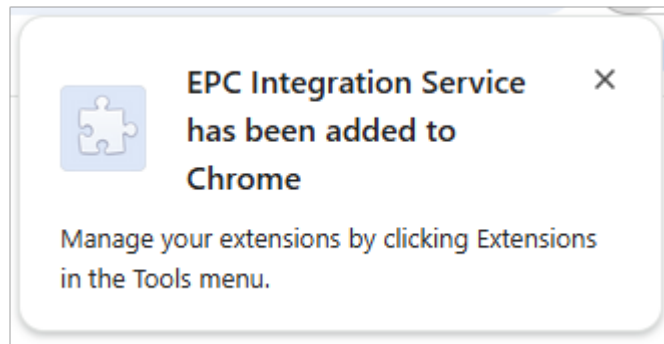
2. Click “Add to Chrome”:



3. Click “Add extension”:



4. View installation message:

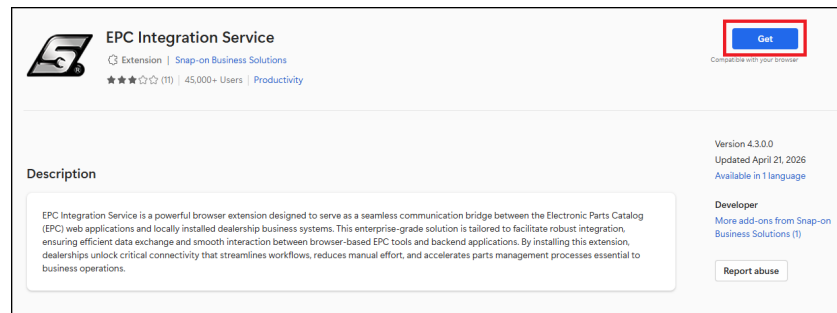


Microsoft Edge

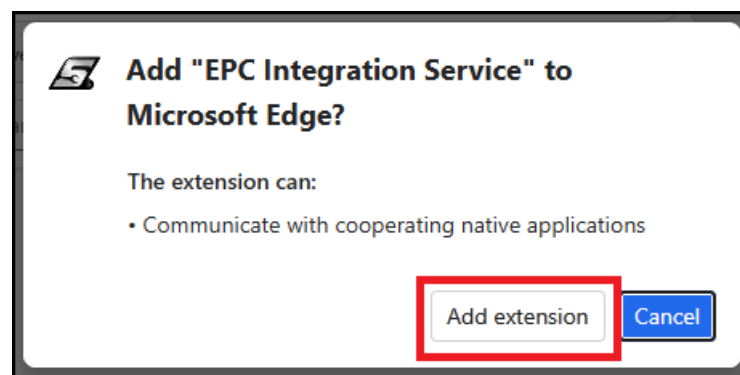
1. Click the link below:

[Snap-on Integration Service Browser Extension for Microsoft Edge](#)

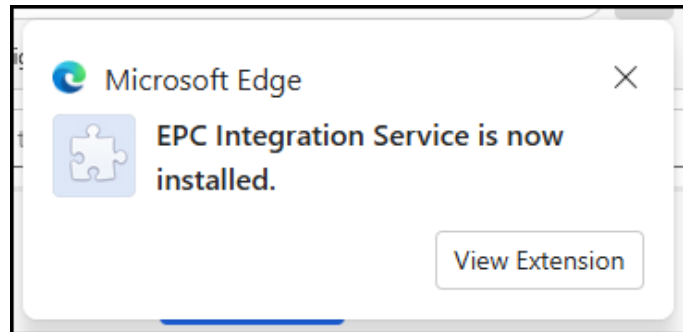
2. Click "Get":



3. Click "Add extension":



4. View installation message:

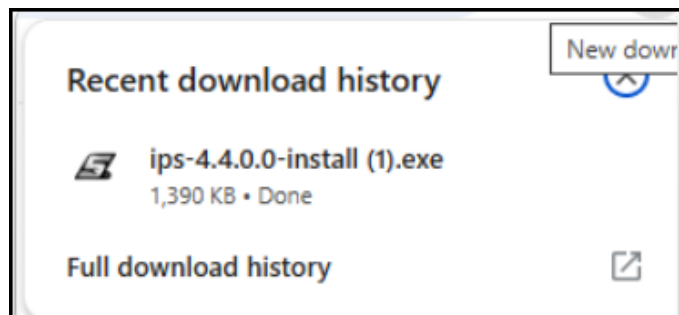


Installation of the IPS Integration Utility

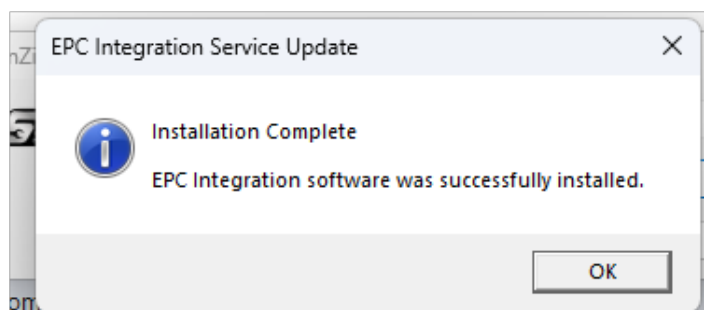
1. Click on the following link to download the Snap-on IPS Integration Utility:

[Snap-on IPS Integration Utility](#)

2. Click the downloaded executable file:



3. View the installation message:



Troubleshooting Installation Issues

In certain environments, IT departments may enforce restrictions on browser extensions and software installations. If you encounter difficulties installing the browser extension or integration utility, please confirm that your IT department has completed the following:

1. Approved the applicable browser extension for installation and use.
2. Added the Snap-on IPS Integration Utility process (IPS3.exe) to the allowed or “whitelisted” applications within any antivirus or endpoint security software managing your system.