



GM Global EPC Updates are Here!

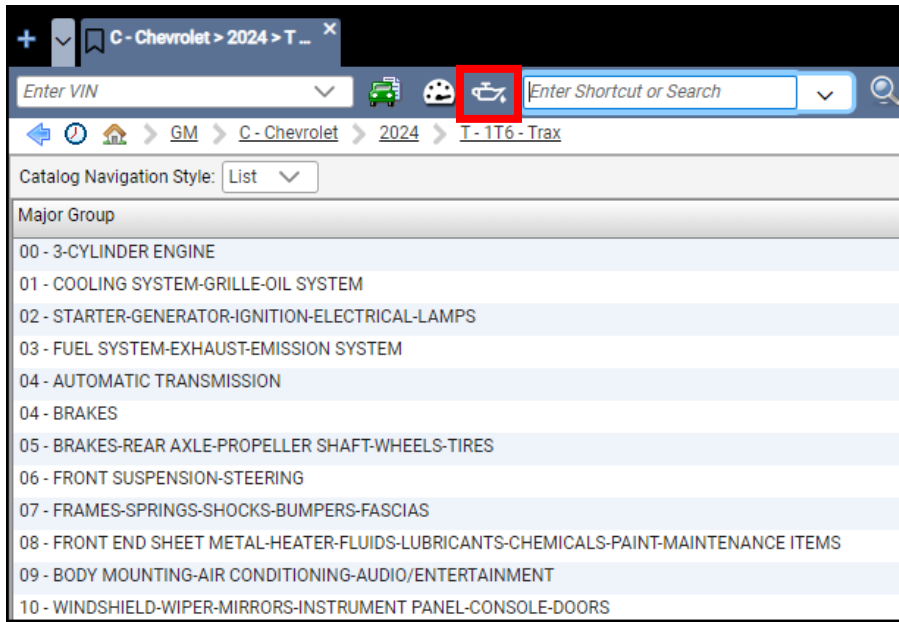
We are pleased to announce the following exciting updates to the GM Global EPC. You will see them on the web-delivered EPC via Global Connect on September 20, 2024. The locally hosted USB media will be mailed on November 8, 2024. As always, we are grateful for your input, which has powered these changes. So, keep the suggestions coming as we work together to develop future improvements!

Quick Link to Recommended Fluids

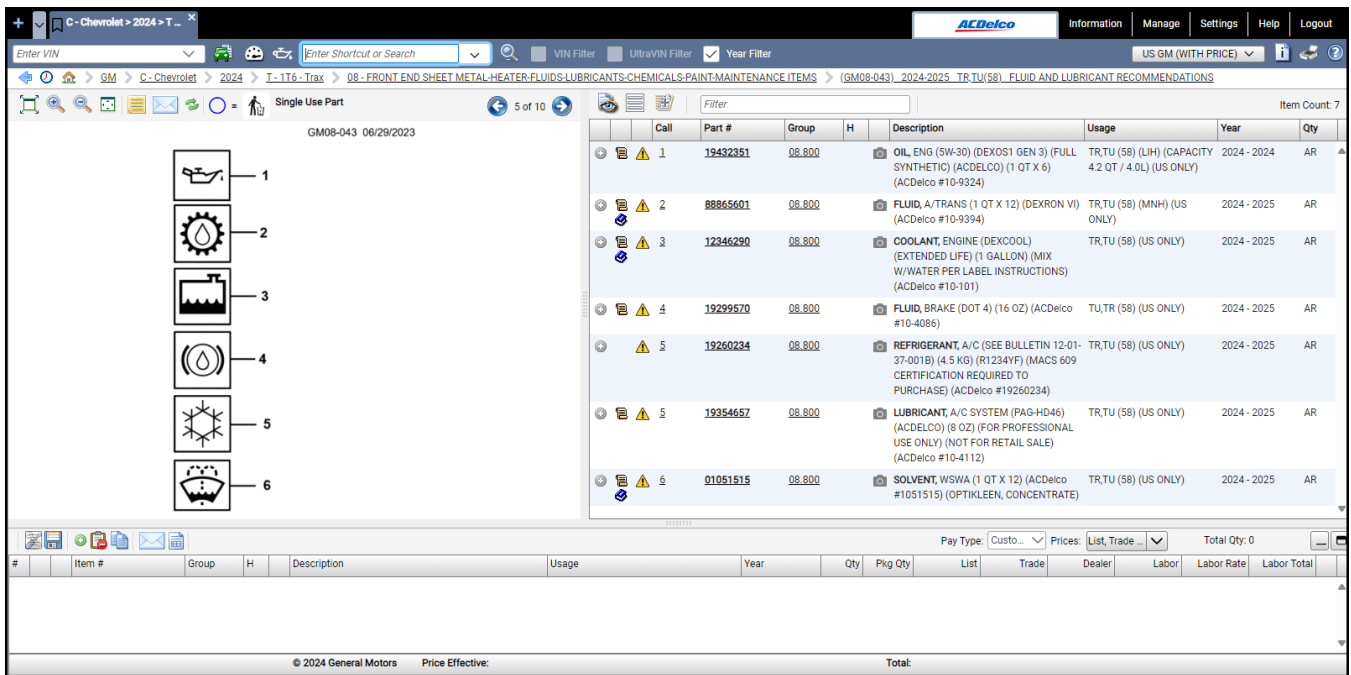
Before, users had to navigate through either the Illustration or Part Group Index to view a vehicle's **Recommended Fluids and Lubricants**.

	Art Number	Years	Model	Illustration Title
1	1T08-107	2024-2025	TR,TU(58)	HOOD
2	1T08-108	2024-2025	TR,TU(58)	FENDER & WHEELHOUSE/FRONT END
3	1T21-125	2024-2025	TR,TU(58)	GUARD/MUD-FRONT & REAR (DEALER INSTALLED, MOLDED VQK)
4	GM08-040	2024-2025	TR,TU(58)	VEHICLE MAINTENANCE
5	GM08-043	2024-2025	TR,TU(58)	FLUID AND LUBRICANT RECOMMENDATIONS
6	GM08-009	2024-2025	TR,TU(58)	PAINT/TOUCH-UP
7	1T08-109	2024	TR,TU(58)	LABELS
8	1N21-026	2024-2025	TR,TU(58)	ACCESSORY KIT/SAFETY (DEALER INSTALLED, HIGHWAY SAFETY S08)
9	1T08-111	2024-2025	TR,TU(58)	SPARE WHEEL STOWAGE & JACK PARTS (Q8E)
10	4T08-104	2024-2025	TR,TU(58)	HOSES & PIPES/HEATER (LIH/1.2-2)

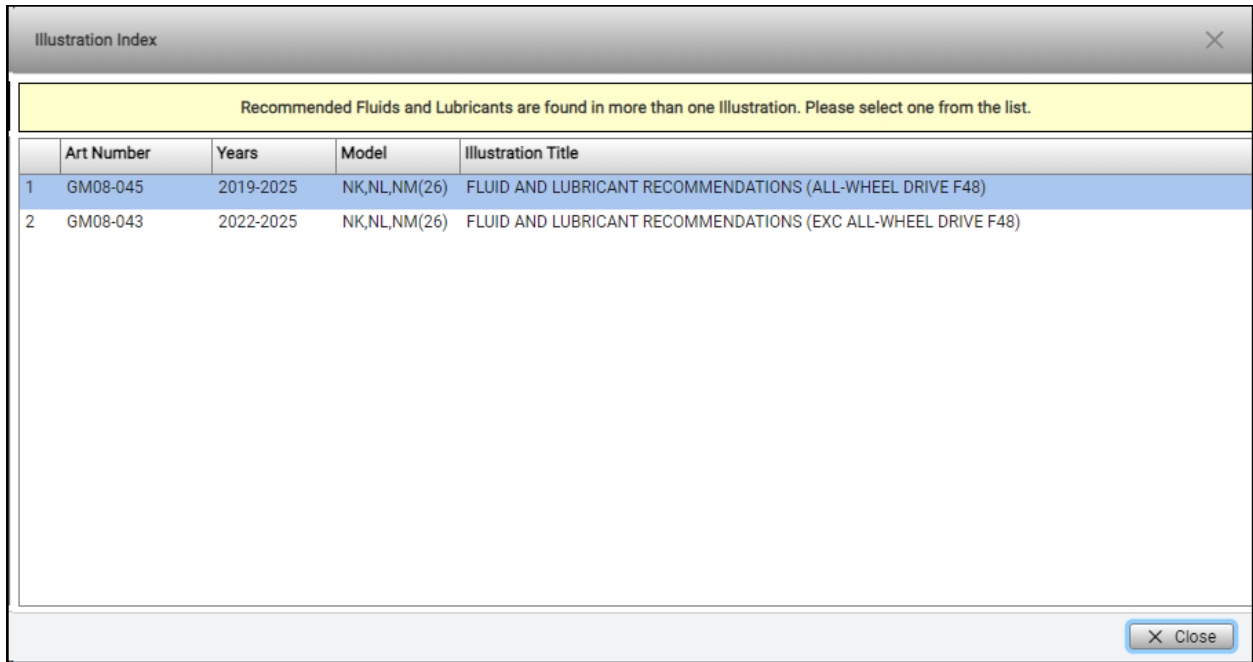
Now, you can quickly access Recommended Fluids and Lubricants by clicking the **oilcan icon** next to the **speedometer** icon on the Tool Bar. This functionality is available for **ERAPA** catalogs if supported by both the vehicle and business region. The icon will be hidden if not supported by the business region and disabled if not supported by the vehicle.



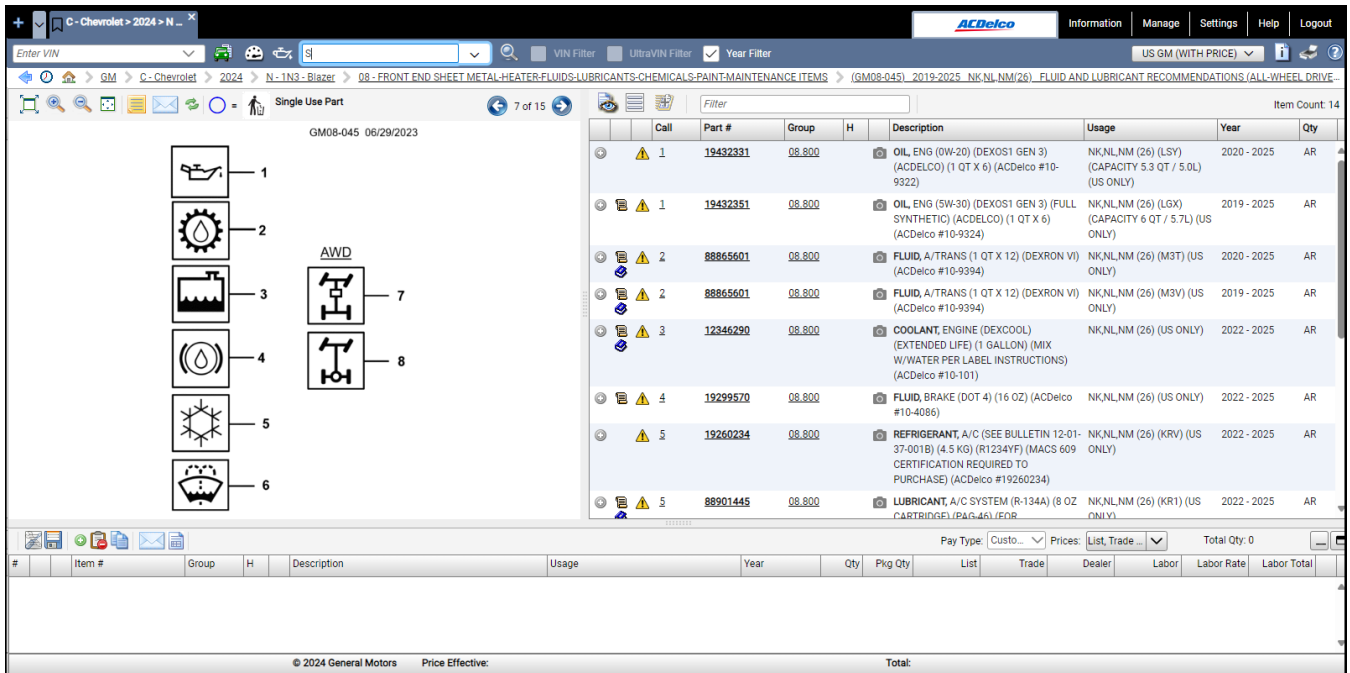
When the icon is clicked, it automatically navigates to the illustration's side-by-side view if the catalog contains only one recommended Fluids and Lubricants illustration for the vehicle.



When the icon is clicked, a dialog with the Illustration Index opens, showing a list of available illustrations if the catalog contains multiple Recommended Fluids and Lubricants illustrations for the vehicle.



When an illustration is selected from the Illustration Index, the corresponding side-by-side view is displayed.



EV VIN Decode

Previously, for both **ICE** and **EV** vehicles, the **VIN** tab on the **VIN Information** window included Engine and Transmission VIN filters populated from the Family Code options. For EV vehicles, the Engine filter always showed “EN0-ENGINE-NONE” and the Transmission filter showed “MF1-TRANSMISSION NONE-ELECTRIC,” neither of which provided meaningful filtering options.

The screenshot shows the 'VIN Information' window for VIN 1GT401EL6RU000200. The window is divided into two main sections: 'VIN Filters' and 'VIN Decode'.

VIN Filters:

- Catalog: E21 L 2024 T Sierra EV
- Model: CT35843 - SILVERADO EV 129 W/BASE CREW CAB (selected), TT35843 - SIERRA EV 129 WHEELBASE CREW CAB
- Engine: EN0 - ENGINE-NONE
- Transmission: MF1 - TRANSMISSION NONE - ELECTRIC

VIN Decode:

1	U.S. Built
G	General Motors
T	GMC Truck
4	GVWR 10001-14000, Brake Sys - Hydraulic, Body Style 43
01	GMC Sierra EV Denali w/SuperCruise
E	Active Manual Belts, Airbags - Driver & Passenger - Front (1st row), Front Seat Side (1st row), Roof Side (all seating rows)
L	XRJ + ETN - ELECTRIC, BET, EAWD, 2-MOTOR SYSTEM 24-MOD
6	Check Digit
R	2024 Model Year
U	Detroit Hamtramck
000200	SERIAL NUMBER

Buttons at the bottom: OK, Cancel, Reset.

Now, for **ERAPA** catalog EV vehicles, the window offers valuable VIN filtering by replacing the Engine and Transmission filters with **Propulsion** (based on the XEP Family Code), **Primary Drive** (based on the ODP Family Code), and **Secondary Drive** (based on the OSD Family Code).

VIN Information

1GT401EL6RU000200

VIN 1GT401EL6RU000200 Year 2024 Build Date 12-Dec-2023 Model T,TT35843 Model Conversion

VIN RPO VCVS

VIN Filters	VIN Decode
Catalog E21 L 2024 T Sierra EV	1 U.S. Built
Model CT35843 - SILVERADO EV 129 W/BASE CREW CAB	G General Motors
TT35843 - SIERRA EV 129 WHEELBASE CREW CAB	T GMC Truck
	4 GVWR 10001-14000, Brake Sys - Hydraulic, Body Style 43
	01 GMC Sierra EV Denali w/Supercruise
	E Active Manual Belts, Airbags - Driver & Passenger - Front (1st row), Front Seat Side (1st row), Roof Side (all seating rows)
Propulsion XRJ - ELECTRIFIED PROPULS ELECTRIC, BET, EAWD, 2-MOTOR S...	L XRJ + ETN - ELECTRIC, BET, EAWD, 2-MOTOR SYSTEM 24-MOD
Primary Drive P8N - PRIMARY DRIVE UNIT GEN 1, 77R, 1 MOTOR, INTERGRATE...	6 Check Digit
Secondary Drive S80 - SECONDARY DRIVE UNIT GEN 1, 80F, 1 MOTOR, INTEGRAT...	R 2024 Model Year
	U Detroit Hamtramck
	000200 SERIAL NUMBER

VIN Notes

Update Design Story Filtering

New enhancements are here to improve filtering based on vehicle design! Previously, GM Global EPC excluded parts with modifiers that resembled **design stories** but were not. For example, a usage note stating “IF USED IN UNITS BUILT PRIOR TO 03-MAR-2017, MUST ALSO ORDER SENSOR 24389782” would result in the parts being filtered out for units built before March 3, 2017.

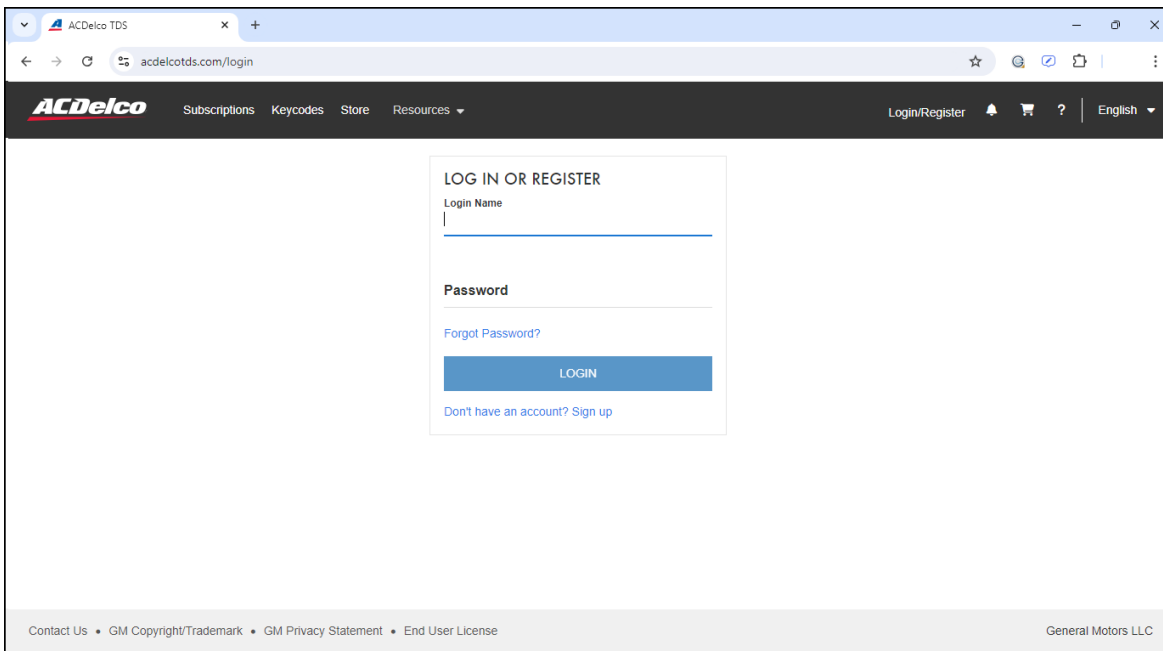
Now, for ERAPA catalogs, GM Global EPC will apply **Production Date** VIN filtering only when the ERAPA part has a valid design story (i.e., the DSN field is not null).

Global Image Feeds

Currently, most of GM’s images are sourced from the US Aftermarket PIM team and used worldwide. However, regions such as Korea or Brazil can now provide a regional image to override a global one. This update enables **any** region to override a global image with a regional one.

Cadillac Australia

GM is preparing to sell and service certain Cadillac vehicles in Australia. To support this, the **Holden** product name has been updated to **GM ANZ**, and Cadillac Lyriq (6M1 and 6MW) catalogs are now accessible to **Australian GM Dealers** and **GM Approved Collision repairers**, provided they have a subscription to the **ACDelco TDS Portal**. Current Australia EPC users will receive access to the Cadillac data via the standard GM Global EPC.



Red Highlighting of EXC

Previously, several Illustration Titles were missing the bold red **“EXC”** highlighting, which clearly marks descriptions that set negative filter criteria in GM Global EPC.

41	U421-088	2023-2024	4C,4E	BEDLINER/PICKUP BOX (DEALER INSTALLED, BEDLINER 5VQ)
42	U412-021	2023-2024	4	ENDGATE (TAILGATE STOWAGE BPC, TAILGATE ASSIST PPA)
43	U412-022	2023-2024	4	ENDGATE (TAILGATE STOWAGE BPC, EXC TAILGATE ASSIST PPA)
44	U412-023	2023-2024	4	ENDGATE (TAILGATE ASSIST PPA, EXC TAILGATE STOWAGE BPC)
45	U412-024	2023-2024	4	ENDGATE (EXC TAILGATE STOWAGE BPC, TAILGATE ASSIST PPA)
46	U412-028	2023-2024	4	ENDGATE MOUNTING (TAILGATE ASSIST PPA)
47	U412-029	2023-2024	4	ENDGATE MOUNTING (EXC TAILGATE ASSIST PPA)
48	U421-064	2023-2024	4C,4E,4F,4H	ENDGATE STORAGE (BPC, DEALER INSTALLED, TAILGATE ORGANIZER TGZ)
49	U421-064	2023-2024	4S	ENDGATE STORAGE (BPC, DEALER INSTALLED, TAILGATE ORGANIZER TGZ)

Now, our bold red “**EXC**” highlights are displaying accurately everywhere they should! This allows you to locate the parts you need faster and with more precision.

41	U421-088	2023-2024	4C,4E	BEDLINER/PICKUP BOX (DEALER INSTALLED, BEDLINER 5VQ)
42	U412-021	2023-2024	4	ENDGATE (TAILGATE STOWAGE BPC, TAILGATE ASSIST PPA)
43	U412-022	2023-2024	4	ENDGATE (TAILGATE STOWAGE BPC, EXC TAILGATE ASSIST PPA)
44	U412-023	2023-2024	4	ENDGATE (TAILGATE ASSIST PPA, EXC TAILGATE STOWAGE BPC)
45	U412-024	2023-2024	4	ENDGATE (EXC TAILGATE STOWAGE BPC, TAILGATE ASSIST PPA)
46	U412-028	2023-2024	4	ENDGATE MOUNTING (TAILGATE ASSIST PPA)
47	U412-029	2023-2024	4	ENDGATE MOUNTING (EXC TAILGATE ASSIST PPA)
48	U421-064	2023-2024	4C,4E,4F,4H	ENDGATE STORAGE (BPC, DEALER INSTALLED, TAILGATE ORGANIZER TGZ)
49	U421-064	2023-2024	4S	ENDGATE STORAGE (BPC, DEALER INSTALLED, TAILGATE ORGANIZER TGZ)

Thank You!



For technical concerns, please call the GM EPC Technical Support help desk at **888-994-6372** or sbs_services@snapon.com.

Do you have EPC enhancement suggestions? Data Issues? "We're listening!" Please send us your feedback from the EPC by selecting **Help -> Contact Us**, then send your comments to gmpartscatalog@gm.com.