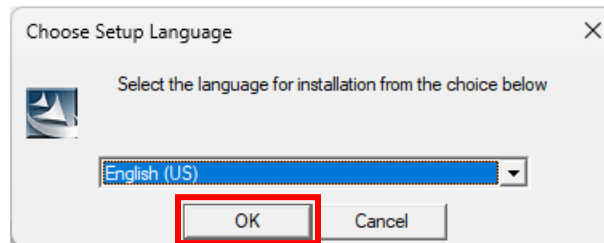
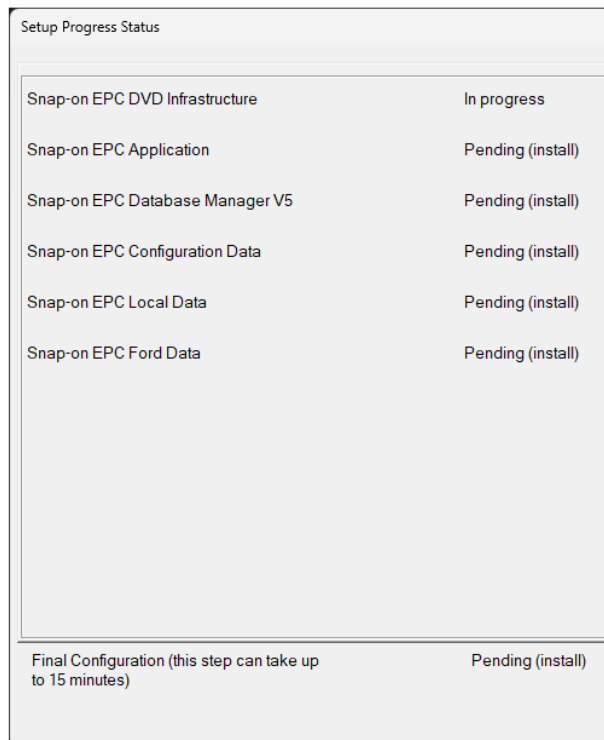


EPC 5 Installation on Standalone/Server

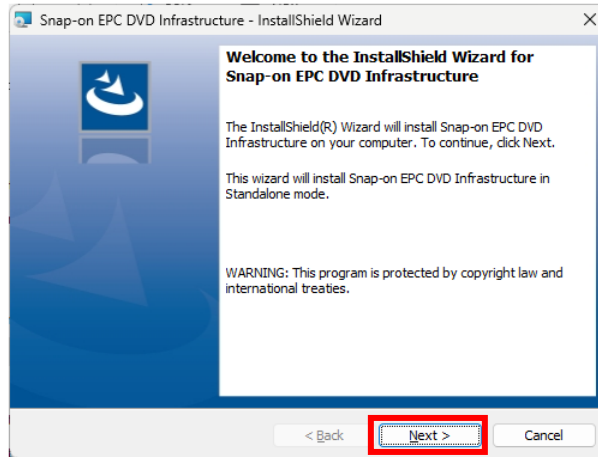
- For Server/Client setups, install the EPC 5 software on your server.
 - For Standalone setups, install the EPC 5 software on your Windows 10/11 PC.
1. Plug the EPC 5 installation flash drive into a USB 3.0/3.1 port. If File Explorer doesn't open, press "**Windows + E**," then select the flash drive from the left pane to view the contents.
 2. Double-click "**Setup**" to start the installation. Choose your language and click "**OK.**"



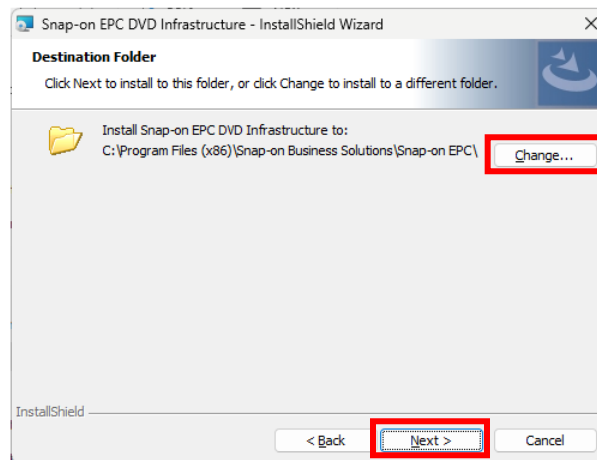
3. The status window shows the installation progress.



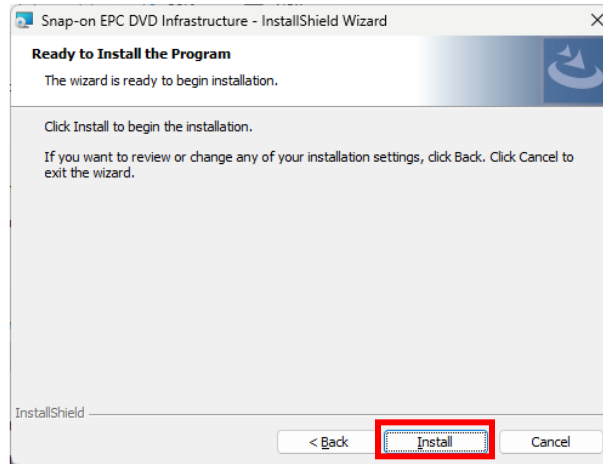
4. Click "**Next**".



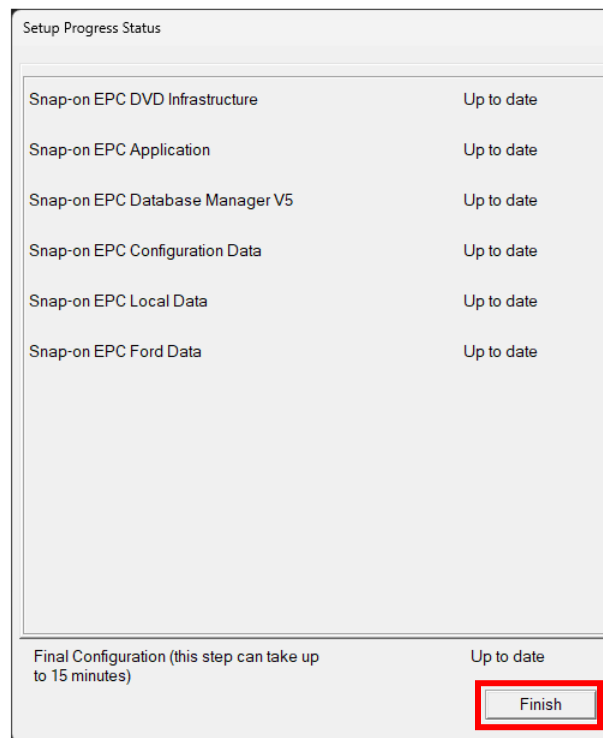
5. Click "**Next**" if the default C:Drive location is correct. To change the install location, click "**Change.**" Click "**Next**" when the location is correct.



6. Click "**Install.**"



7. A progress indicator window will appear. When complete, if all components show **“Up to date”** and the **“Finish”** button is visible, the installation was successful. Click **“Finish”** to close this window.

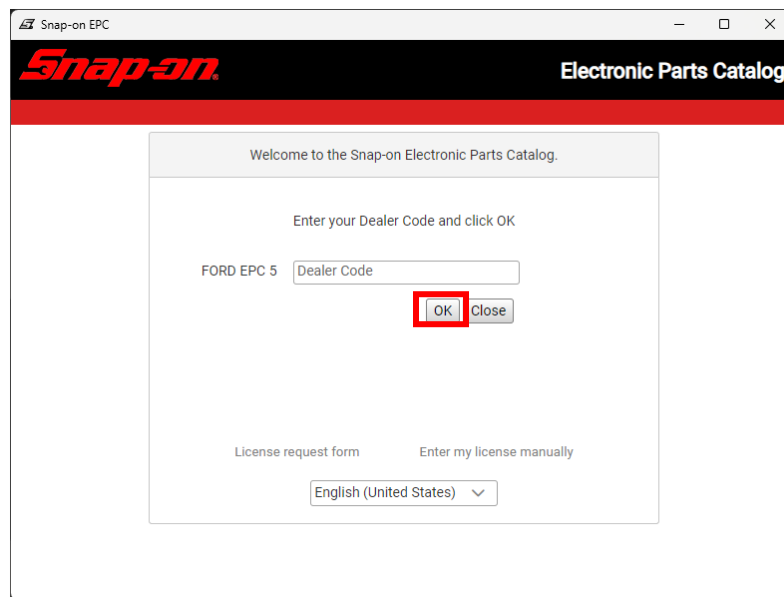


8. For **“Standalone”** configuration, double-click the **“Snap-on EPC”** icon. For Server/Client, see the **“Installing EPC 5 on a Client PC”** section below.

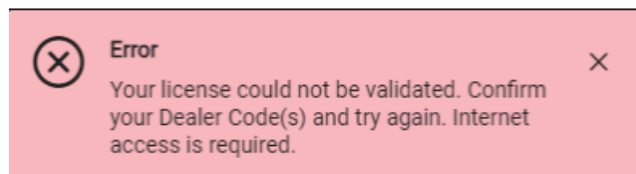


9. Enter your **Dealer ID code** for your franchise and click **“OK.”**

- If this is a **“Standalone”** configuration and the EPC opens without error, the installation is complete.
- If this is a **“Server/Client”** configuration, please proceed to the next section for creating an EPC icon on your client.



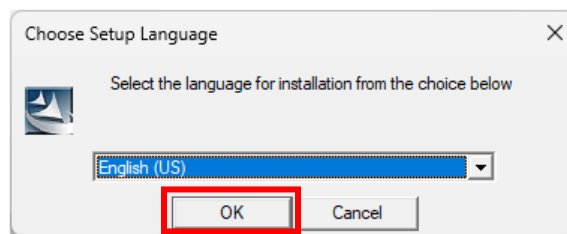
10. If the screen below appears, EPC 5 can't find a valid license for your Dealer ID. Contact Snap-on Tech Support at **800-656-4772**.



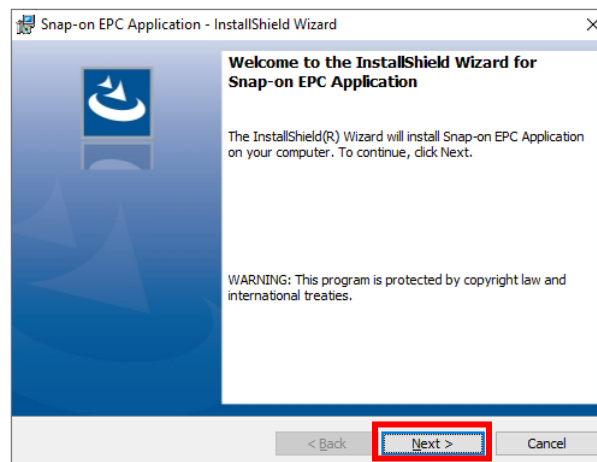
Installing EPC 5 on a Client PC (Server/Client configuration)

1. Note your Server's name, then go to your client PC (Windows 10/11).
2. Press **“Windows + R”** to open the **“Run”** window.

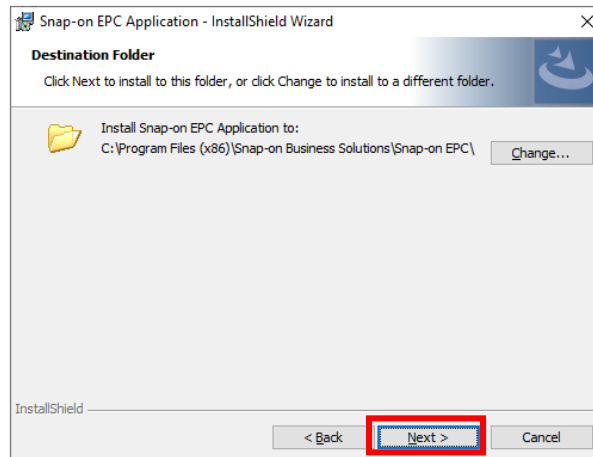
3. In the “**Open**” field, enter \\ followed by your server’s name (e.g., [\\SS12345](#)), then click “**OK.**”
4. A File Explorer window will open. Double-click the “**Snap-on EPC Client**” folder to open it.
5. Double-click “**Setup.**”
6. Select your language and click “**OK.**”



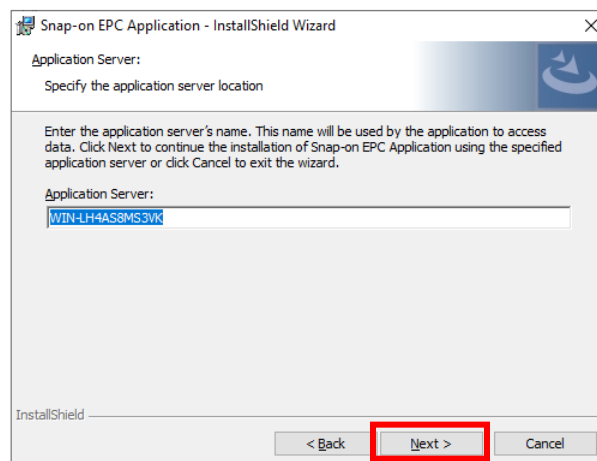
7. Click “**Next.**”



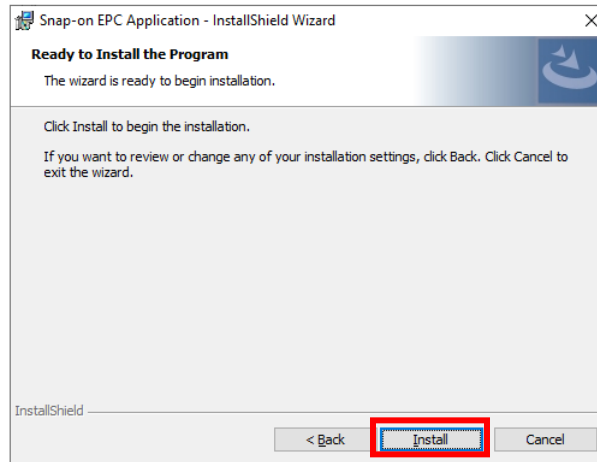
8. Click “**Next**” if the default C:Drive location is correct. To change the install location, click “**Change.**” Click “**Next**” when the location is correct.



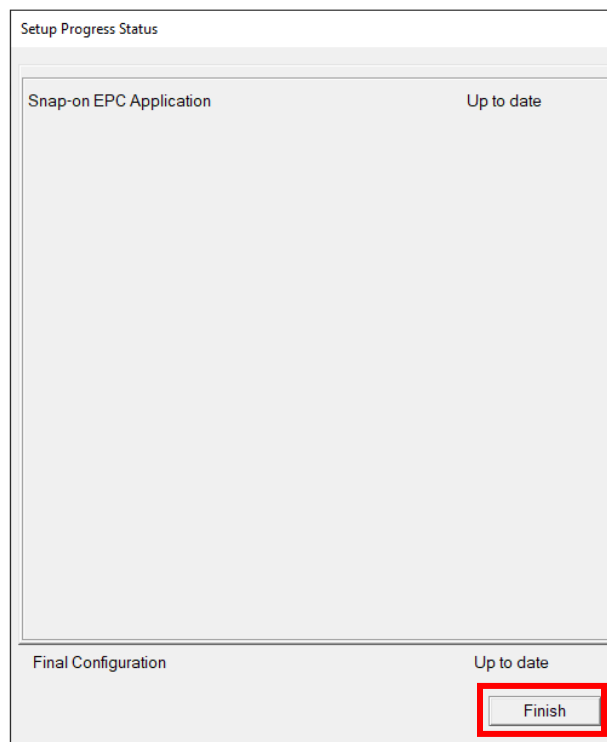
9. Verify the “**Application Server**” field has your server's name, then click “**Next.**”

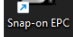


10. Click “**Install.**”



11. Click **“Finish.”**



12. Double-click the “Snap-on EPC” icon.  If EPC 5 opens, the installation is complete.