

SNAP-ON EPC 5 FOR GENESIS

Evolution through simplification: introducing Snap-on EPC 5 for Genesis. Built to help you get the parts information you need, when you need it, this is our easiest, most efficient EPC to date.

APPLICATION FEATURES:

Web and/or Locally Installed EPC Options

- The same reliable, modern interface on both products.
- Web EPC available from any PC via browser (support for Chrome, Firefox and Edge).
- Web EPC always up to date (no DVD updates).
- Local EPC ideal as a back-up or primary system.
- Local EPC automated Internet data updates available.

VIN Filtering

- VIN filtering at the illustration and part level to improve search accuracy.

Advanced Parts Data Content

- Includes all Genesis years and models. Note that, in the U.S., models from 2019 beyond are included **only** in the Genesis EPC.
- Local accessories.*
- Local parts.*
- Local MSDS/Parts and Technical Service bulletins.†
- Local price and supersession data.*

OneSearch Functionality

- A single search interface for part name, part number, PNC, partial part number, and synonym searches.

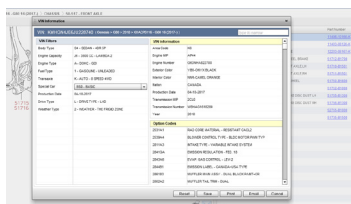
Additional EPC Productivity Benefits

- Parts price data always up to date.*
- Supersession data always up to date.*
- User notes and OEM notes.
- Type to Narrow search.
- Integration to Dealer Management Systems. ‡
- Work on multiple jobs simultaneously.
- Use Quicklists to create reusable parts lists for common repairs.
- Easy-to-use illustrations.
- Quickly email illustrations and part lists.
- Create customer estimates.
- Copy part number with right mouse click.
- Manual filters.
- Parts lists.
- Part Validation Search quickly finds and validates multiple items.
- Reverse look-up.
- Seamless feedback process.

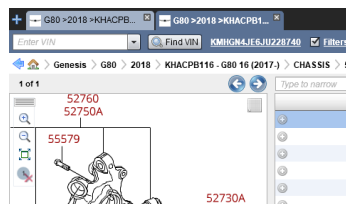
* Requires Distributor participation.

‡ Requires Dealer Management System provider participation.

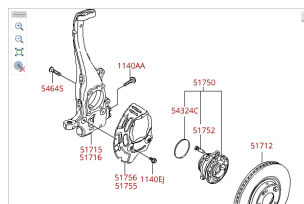
‡ Star Flat-File, PIA, and SIP available now.



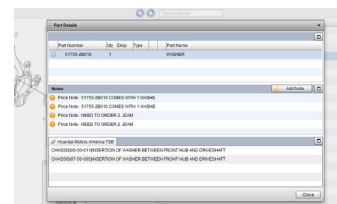
VIN Filtering



Multiple Jobs



Illustrations



Part Details

SNAP-ON EPC 5

FOR GENESIS

System Requirements

EPC 5 HARDWARE REQUIREMENTS

Specifications	Minimum	Recommended
Operating System	Windows 10 Professional or Enterprise	Windows 11 Professional or Enterprise
Processor	Intel® Core™ i-series processor	Intel® Core™ i-series processor
Memory	8 GB RAM (Standalone and PC Client)	16 GB RAM (Standalone and PC Client)
Hard Drive (free space)	Standalone: 500 GB (per brand subscribed to) PC Client: 20 GB	Standalone: 1 TB (per brand subscribed to) PC Client: 20 GB
Local Media	3.0 USB Port (standalone only)	3.0 USB Port (standalone only)
Internet Browser	Microsoft Edge (current update) Google Chrome (current update) Mozilla Firefox (current update)	Microsoft Edge (current update) Google Chrome (current update) Mozilla Firefox (current update)
Internet Connection	Broadband (required for online updating)	Broadband