

# SNAP-ON EPC 5 FOR FORD

Evolution through simplification: introducing Snap-on EPC 5 for Ford. Built to help you get the parts information you need, when you need it, this is our easiest, most efficient EPC to date.

## APPLICATION FEATURES:

### ✓ Web and/or Locally Installed EPC Options

- The same reliable, modern interface on both products.
- Web EPC available from any PC via browser (support for IE, Chrome, Firefox and Edge).
- Web EPC always up to date (no DVD or USB updates).
- Local EPC ideal as a back-up or primary system.
- Local EPC automated Internet data updates available.

### ✓ VIN Filtering

- VIN filtering at the illustration and part level to improve search accuracy.

### ✓ Advanced Parts Data Content

- Available Heavy Duty data.
- Access to Ford websites.

### ✓ OneSearch Functionality

- A single search interface for base number, multiple base numbers, part name, engineering number, part number, TAG ID numbers, Motorcraft numbers, and synonym searches.

### ✓ CARS catalogs filtering

- Additional filtering for old CARS catalogs.
- Eng, Transmission, Body Type, Drive type, Interior, Cab Style.
- Color, Trim and Parts Lists filtering.

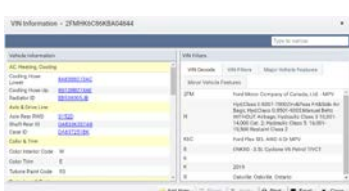
### ✓ Additional EPC Productivity Benefits

- Parts price data always up to date.\*
- Supersession data always up to date.\*
- User notes and OEM notes.
- Type to Narrow search.
- Integration to Dealer Management Systems. †
- Work on multiple jobs simultaneously.
- Easy-to-use illustrations.
- Quickly email illustrations and part lists.
- Create customer estimates.
- Swappable illustration and parts List positions.
- Copy part number with right mouse click.
- Manual filters.
- Parts lists.
- Reverse look-up.
- seamless feedback process
- SBS University (SBS-U) delivers basic and expert training on all aspects of your Snap-on parts catalog.

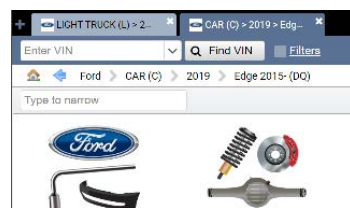
\* Requires Distributor participation.

† Requires Dealer Management System provider participation.

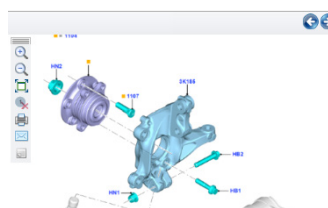
‡ Star Flat-File, PIA, and SIP available now.



VIN Filtering



Multiple Jobs



Illustrations



Part Details

# SNAP-ON EPC 5

## FOR FORD

### System Requirements

#### EPC 5 HARDWARE REQUIREMENTS

Specifications	Minimum	Recommended
Operating System	Windows 10 Professional or Enterprise	Windows 10 Professional or Enterprise
Processor	Intel® Core™ i-series processor	Intel® Core™ i-series processor
Memory	8 GB RAM (Standalone and PC Client)	16 GB RAM (Standalone and PC Client)
Hard Drive (free space)	Standalone: 250 GB (per brand subscribed to) PC Client: 20 GB	Standalone: 250 GB (per brand subscribed to) PC Client: 20 GB
Local Media	One DVD-ROM drive (standalone only)	3.0 USB Port (standalone only)
Internet Browser	Internet Explorer 11 (current update) Microsoft Edge (current update) Google Chrome (current update) Mozilla Firefox (current update)	Internet Explorer 11 (current update) Microsoft Edge (current update) Google Chrome (current update) Mozilla Firefox (current update)
Internet Connection	Broadband (required for online updating)	Broadband