

SNAP-ON EPC 5 FOR SUBARU

Evolution through simplification: introducing Snap-on EPC 5 for Subaru. Built to help you get the parts information you need, when you need it, this is our easiest, most efficient EPC to date.

APPLICATION FEATURES:

✓ Web and/or DVD EPC Options

- The same reliable, modern interface on both products.
- Web EPC available from any PC via browser (support for IE, Chrome, Firefox and Edge).
- Web EPC always up to date.
- DVD EPC ideal as a back-up or primary VIN system.

✓ VIN Filtering

- VIN filtering at the illustration and part level to improve search accuracy.

✓ Advanced Parts Data Content*

- Local prices.**
- Local supersession.**
- Local parts information.**
- Local Technical Service Bulletins.**
- Local accessories.***

✓ OneSearch Functionality

- A single search interface for part name, part number, partial part number, reference number, section number, and synonym searches.

✓ Additional EPC Productivity Benefits

- Parts price data always up to date.*
- Supersession data always up to date.*
- User notes and Local Distributor notes.
- Type to Narrow search.
- Integration to Dealer Management Systems. †
- Work on multiple jobs simultaneously.
- Easy-to-use illustrations.
- Quickly email illustrations and part lists.
- Create customer estimates.
- Swappable Illustration and Parts List Positions
- Copy part number with right mouse click.
- Manual filters.
- Parts lists.
- Reverse look-up.
- SBS University (SBS-U) delivers basic and expert training on all aspects of your Snap-on parts catalog.

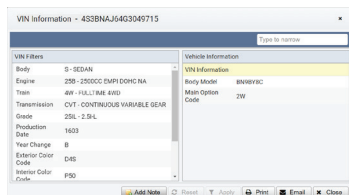
* Publishing local parts content requires approval from Subaru Japan.

** Requires Distributor participation. Standard formats available free of charge and custom formats possible for a fee.

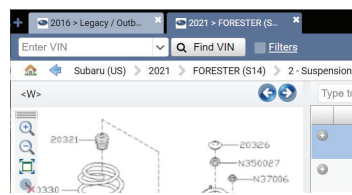
*** Custom formats possible for a fee.

† Requires Dealer Management System provider participation.

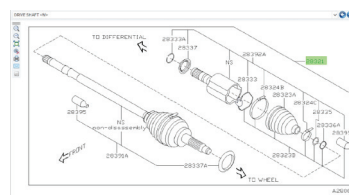
‡ Basic and Advanced Integration available free of charge. Custom integration possible for a fee.



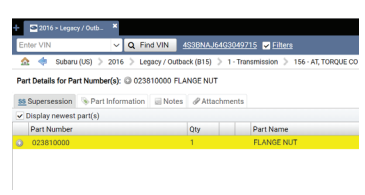
VIN Filtering



Multiple Jobs



Illustrations



Part Details

SNAP-ON EPC 5

FOR SUBARU

System Requirements

EPC 5 HARDWARE REQUIREMENTS

Specifications	Minimum	Recommended
Operating System	Windows 10 Professional or Enterprise	Windows 10 Professional or Enterprise
Processor	Intel® Core™ i-series processor	Intel® Core™ i-series processor
Memory	8 GB RAM (Standalone and PC Client)	16 GB RAM (Standalone and PC Client)
Hard Drive (free space)	Standalone: 250 GB (per brand subscribed to) PC Client: 20 GB	Standalone: 250 GB (per brand subscribed to) PC Client: 20 GB
Local Media	One DVD-ROM drive (standalone only)	3.0 USB Port (standalone only)
Internet Browser	Internet Explorer 11 (current update) Microsoft Edge (current update) Google Chrome (current update) Mozilla Firefox (current update)	Internet Explorer 11 (current update) Microsoft Edge (current update) Google Chrome (current update) Mozilla Firefox (current update)
Internet Connection	Broadband	Broadband