

SNAP-ON EPC 5 FOR FORD

Evolution through simplification: introducing Snap-on EPC 5 for Ford. Built to help you get the parts information you need, when you need it, this is our easiest, most efficient EPC to date.

APPLICATION FEATURES:

✓ Web and/or Locally Installed EPC Options

- The same reliable, modern interface on both products.
- Web EPC available from any PC via browser (support for IE, Chrome, Firefox and Edge).
- Web EPC always up to date (no DVD or USB updates).
- Local EPC ideal as a back-up or primary system.
- Local EPC automated Internet data updates available.

✓ VIN Filtering

- VIN filtering at the illustration and part level to improve search accuracy.

✓ Advanced Parts Data Content

- Available Heavy Duty data.
- Access to Ford websites.

✓ OneSearch Functionality

- A single search interface for base number, multiple base numbers, part name, engineering number, part number, TAG ID numbers, Motorcraft numbers, and synonym searches.

✓ CARS catalogs filtering

- Additional filtering for old CARS catalogs.
- Eng, Transmission, Body Type, Drive type, Interior, Cab Style.
- Color, Trim and Parts Lists filtering.

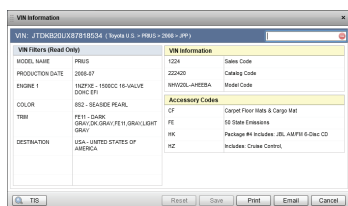
✓ Additional EPC Productivity Benefits

- Parts price data always up to date.*
- Supersession data always up to date.*
- User notes and OEM notes.
- Type to Narrow search.
- Integration to Dealer Management Systems. ‡†
- Work on multiple jobs simultaneously.
- Easy-to-use illustrations.
- Quickly email illustrations and part lists.
- Create customer estimates.
- Copy part number with right mouse click.
- Manual filters.
- Parts lists.
- Reverse look-up.

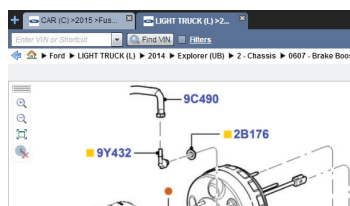
* Requires Distributor participation.

‡ Requires Dealer Management System provider participation.

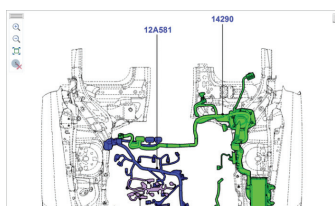
† Star Flat-File, PIA, and SIP available now.



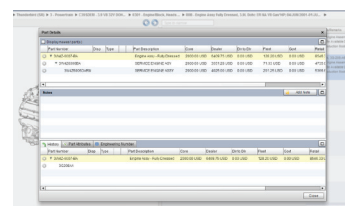
VIN Filtering



Multiple Jobs



Illustrations



Part Details

SNAP-ON EPC 5

FOR FORD

System Requirements

EPC 5 HARDWARE REQUIREMENTS

Specifications	Minimum	Recommended
Operating System	Windows 7 Professional, Enterprise or Ultimate (32 or 64 bit).	Windows 10 Professional 64 bit**
Processor	2.0 GHz Intel® Pentium® 4	Intel® i5 Quad-Core
Memory	8 GB RAM (Standalone and PC Client)	16 GB RAM (Standalone and PC Client)
Hard Drive (free space)	Standalone: 500 GB PC Client: 20 GB	Standalone: 1 TB SSD PC Client: 1 TB
Internal DVD Drive	Standalone: One DVD-ROM drive	Standalone: Two DVD-ROM Drives, 16x or 3.0 USB Port***
Internet Browser*	Internet Explorer 11.0 Mozilla Firefox v17 Google Chrome 14 Microsoft Edge	Internet Explorer 11.0
Internet Connection	Broadband required for online updating	Broadband required for online updating
Video	1024 x 768 resolution, 256 colors	1248 x 1024 resolution

* For EPC 5 web users, Adobe Flash Player 11.5+ and Java 1.6_16+ is also required

** Windows 8.1 Professional and Enterprise is supported but not recommended as the OS is not designed for business use.

*** Depending on whether you select the DVD or USB media for local installation and whether your OE supports USB installation.